



CLOUD9

FABRICS

FREE PROJECT SHEET **CUBISM QUILT** | SIZE 48" x 60"



DESIGN **MICHELLE ENGEL BENCSKO**

TECHNICAL EDITOR **MELANIE TUAZON**

© CLOUD9 FABRICS 2015 | ALL RIGHTS RESERVED

CLOUD9FABRICS.COM

MATERIALS

CUBISM QUILT FEATURING KINDRED BY LISA CONGDON

½ yard each: Blomma [Turquoise, Citron & Pink], Credo [Turquoise, Pink, Red & Black], Delicata [Turquoise, Pink & Multi], Fable [Blue, Citron & Gray]

1¾ yards Cirrus Solids Limestone for Background

½ yard Cirrus Solids Grass for Binding

3½ yards Blomma [Turquoise] for Backing

Note: All possible care has been taken to assure the accuracy of this pattern. We are not responsible for printing errors or the manner in which individual work varies. Please read instructions carefully before starting the construction of this quilt. If desired, wash and iron your fabrics before starting to cut.

CUTTING DIRECTIONS

Cutting dimensions include ¼" seam allowances.

1. Print out templates **A** and **B** at 100% and cut out.
2. Using template **A**, cut 64 triangles from the Limestone fabric. *[fig 1a]*
3. Using template **B**, cut diamonds from the following fabric:
[fig 1b]

<i>Fabric</i>	<i>Diamond Template B</i>
Blomma [Turquoise]	3
Blomma [Citron]	5
Blomma [Pink]	5
Credo [Turquoise]	3
Credo [Pink]	4
Credo [Red]	3
Credo [Black]	3
Delicata [Turquoise]	7
Delicata [Pink]	5
Delicata [Multi]	4
Fable [Blue]	5
Fable [Citron]	3
Fable [Gray]	5

BLOCK ASSEMBLY

4. Referring to **QUILT DIAGRAM** and using ¼" seam allowance, sew triangles and diamonds together, alternating between shapes. Each strip will have 8 triangles and 7 diamonds. Press toward prints. *[fig 2]*

5. Repeat for remaining rows, noting that angles are mirrored in every other row. *Note:* directional prints will be affected.

ASSEMBLING THE QUILT

6. Referring to **QUILT DIAGRAM**, sew strips together in vertical rows. Square top up, keeping diamonds intact. [fig 3]

7. Layer the quilt top, batting, and backing. Baste, quilt as desired, and bind.

DIAGRAMS

fig 1a

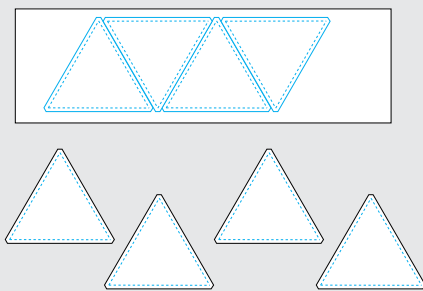


fig 1b

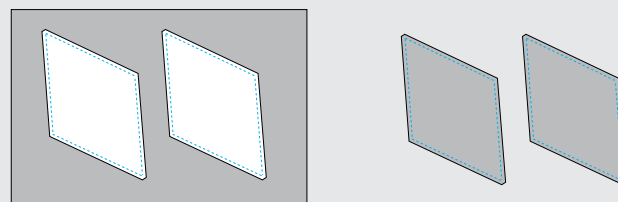


fig 2

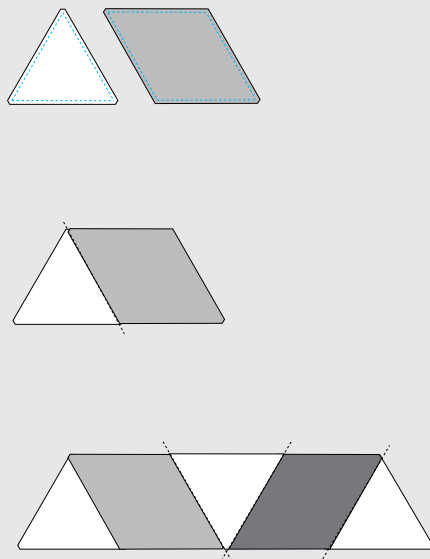


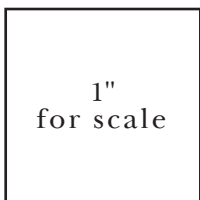
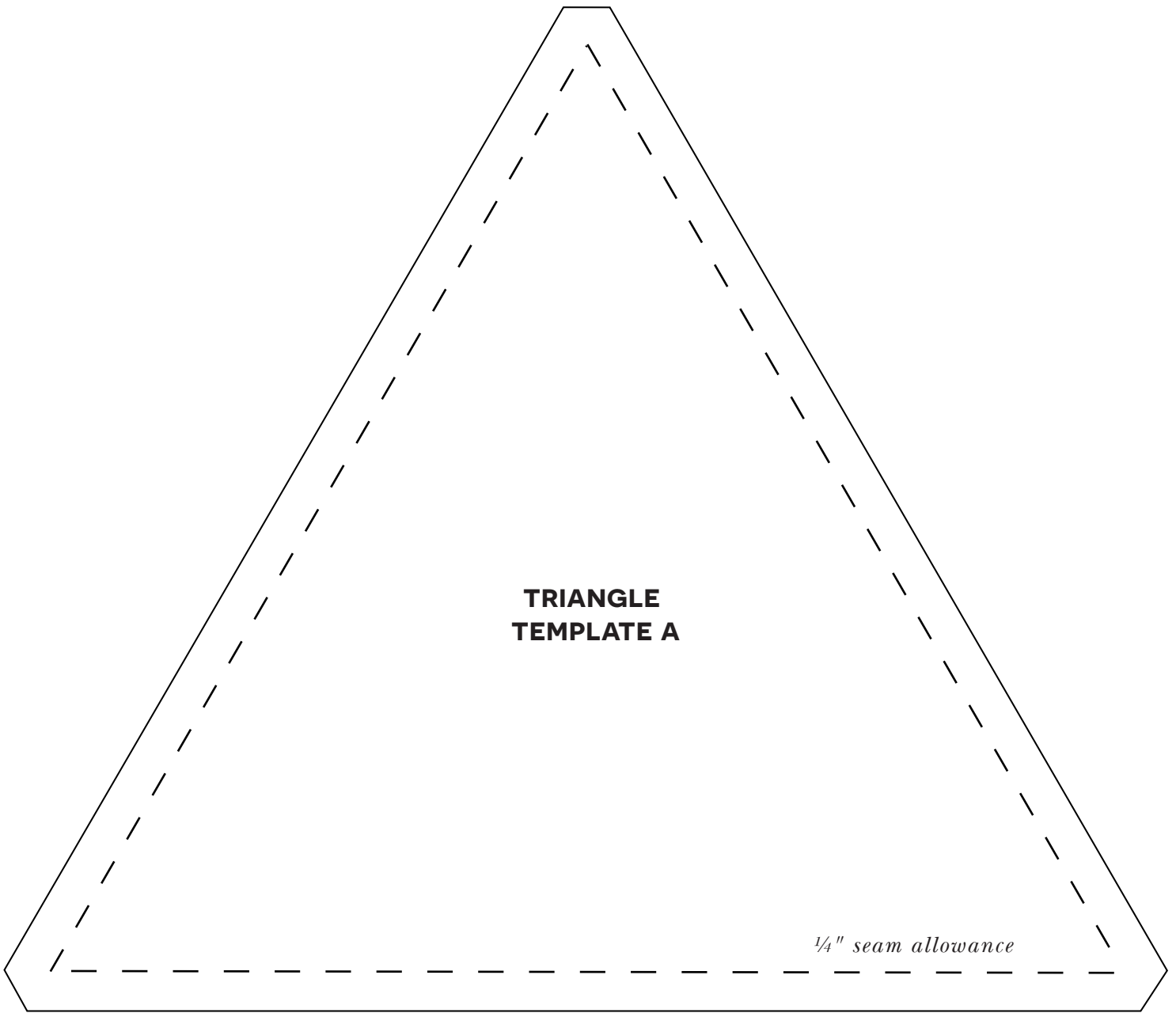
fig 3



QUILT DIAGRAM

- Blomma [Citron]
- Blomma [Turquoise]
- Blomma [Pink]
- Credo [Red]
- Credo [Pink]
- Credo [Turquoise]
- Credo [Black]
- Delicata [Turquoise]
- Delicata [Pink]
- Delicata [Multi]
- Fable [Blue]
- Fable [Gray]
- Fable [Citron]
- Limestone





**DIAMOND
TEMPLATE B**

1"
for scale

1/4" seam allowance

Print template at 100%

